

designer PATRIZIA GARGANTI

Chaos

year: 2018

The name encompasses its most intimate essence: from a starting module it is possible to replicate a myriad of infinite forms, hence Chaos.





▲ Item **Chaos 08**
40 led lights chandelier
Finish: Gold plated
Lampshades: Clear cutted
crystals



◀ Item **Chaos 06**
32 led lights chandelier
Finish: Polished nickel
Lampshades: Hexagonal incamiciato
white blown glass

▼ Item **Chaos 05**
16 led lights chandelier
Finish: Polished nickel
Lampshades: Hexagonal incamiciato
white blown glass



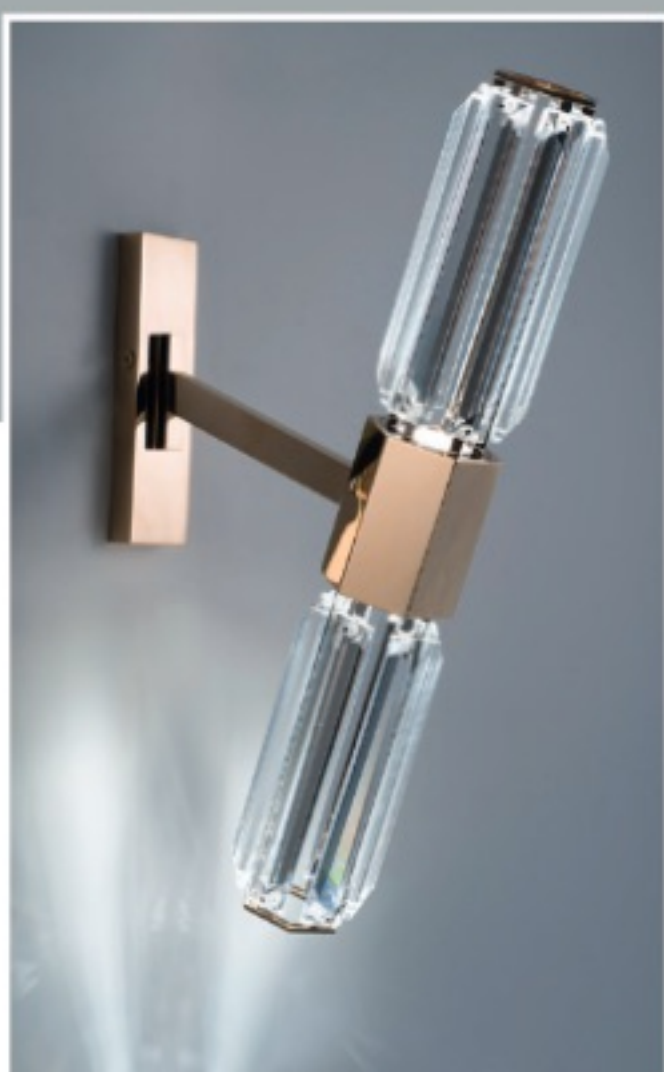
Its *squared* lines
recount a **functional**,
aesthetic and
geometric *storytelling*.



▲ Item **Chaos 10**
 2 led lights wall lamp
 Finish: Polished nickel
 Lampshades:
 Hexagonal clear blown
 glass



▲ Item **Chaos 11**
 2 led lights wall lamp
 Finish: Copper
 Lampshades:
 Hexagonal
 incamiciato white
 blown glass



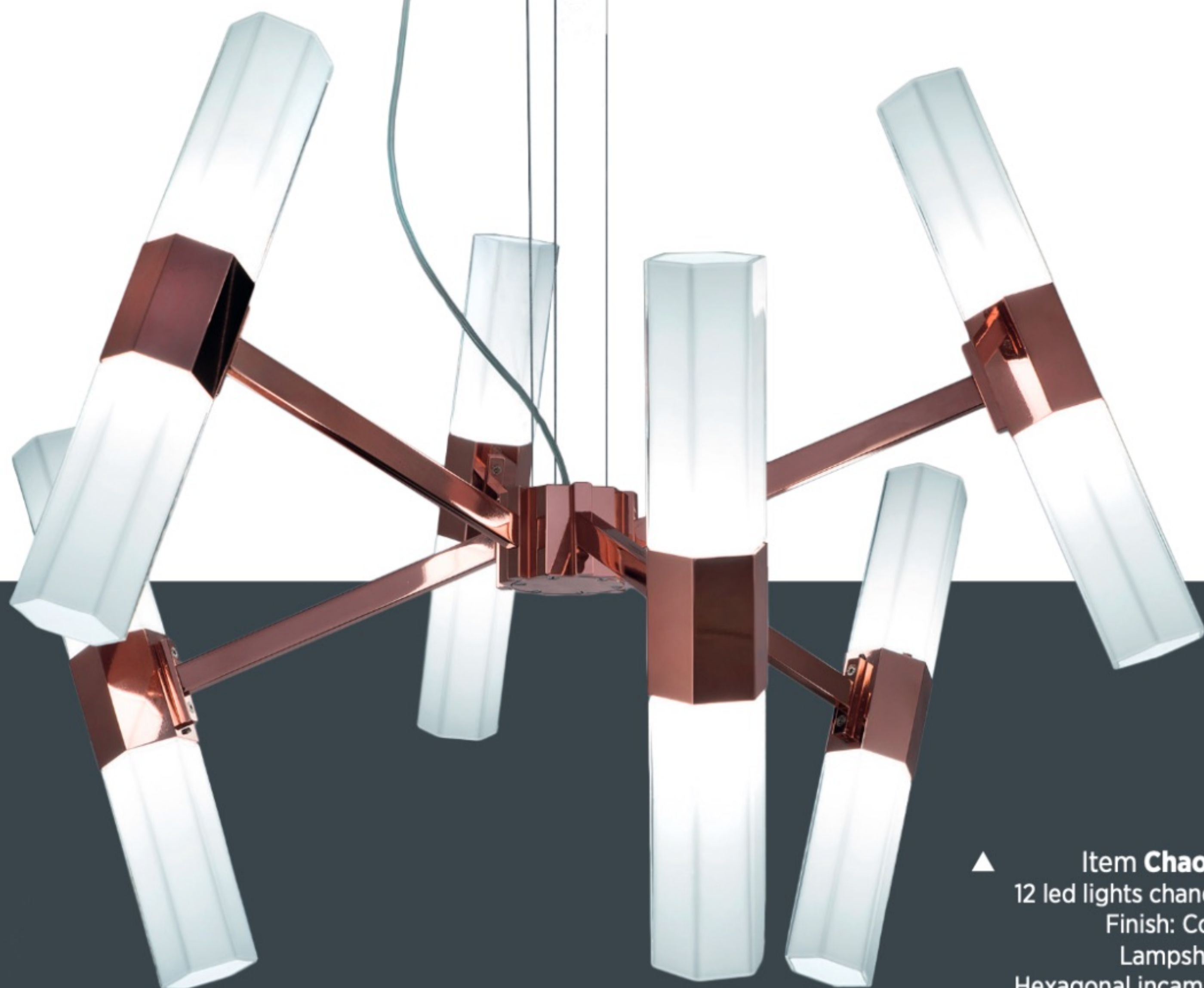
▲ Item **Chaos 10**
 2 led lights wall lamp
 Finish: Gold plated
 Lampshades: Clear
 cutted crystals



▼ Item **Chaos 08**
 40 led lights chandelier
 Finish: Gold plated
 Lampshades: Hexagonal
 clear blown glass



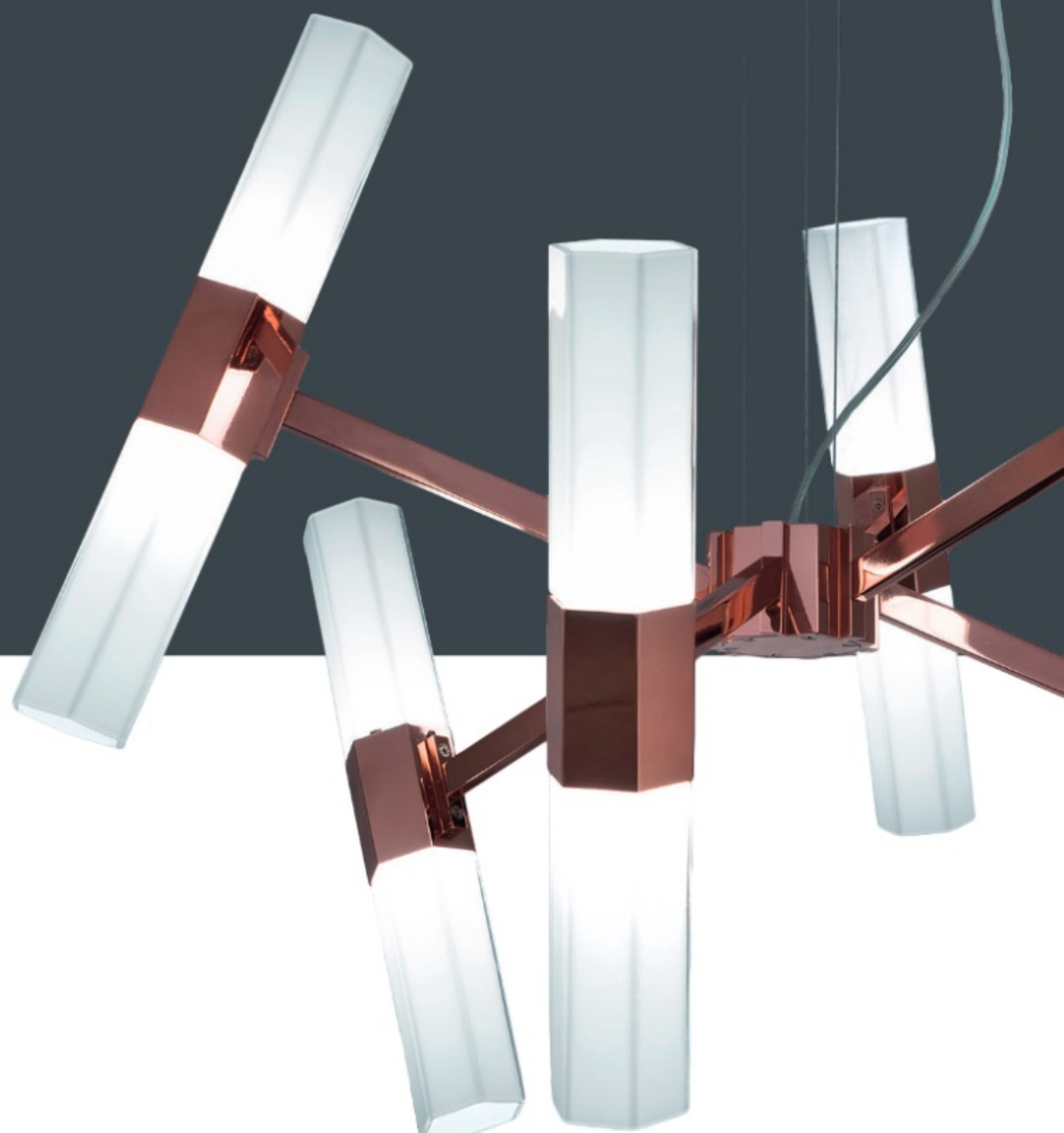
◀ Item **Chaos 07**
32 led lights chandelier
Finish: Gold plated
Lampshades: Hexagonal
incamiciato white blown
glass



▲ Item **Chaos 04**
12 led lights chandelier
Finish: Copper
Lampshades:
Hexagonal incamiciato
white blown glass
▼

Composition of *hexagons*

A calm chaos, elegant and composed. A stylistic system with structured tones where the real star is the hexagonal module. Its squared lines recount a functional, aesthetic and geometric storytelling. The name encompasses its most intimate essence: from a starting module it is possible to replicate a myriad of infinite forms, hence Chaos.





...from a starting module
it is possible to **replicate**
a myriad of infinite forms,
hence **Chaos**.



◀ **Item Chaos 03**
(composition of 2 pieces)
12+12 led lights chandelier
Finish: Polished nickel
Lampshades: Clear cutted
crystals

▼ **Item Chaos 03**
12 led lights chandelier
Finish: Polished nickel
Lampshades: Hexagonal clear
blown glass

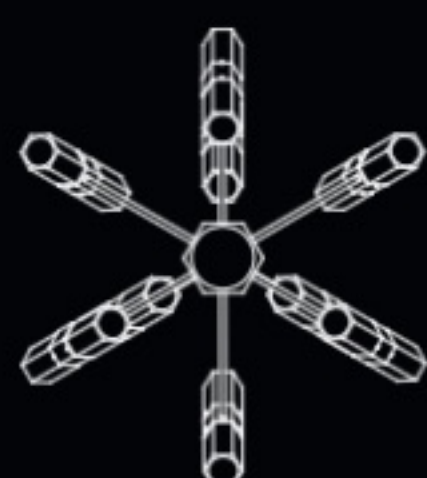


collection

Item Chaos 01
 Ø 80 cm
 H.110 cm min



Item Chaos 02
 Ø 80 cm
 H.90 cm min



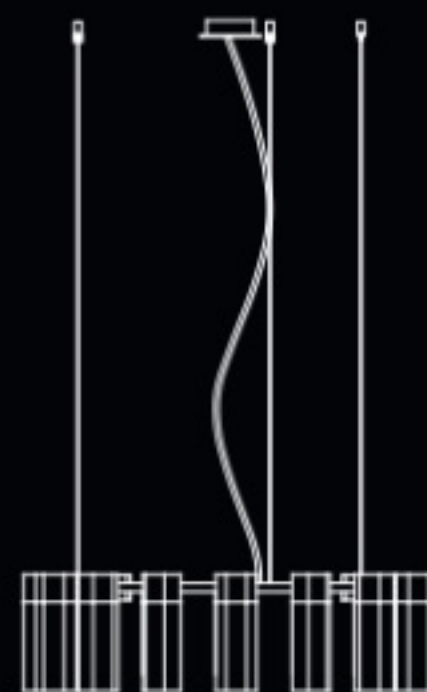
Item Chaos 03
 Ø 55 cm
 H.165 cm min



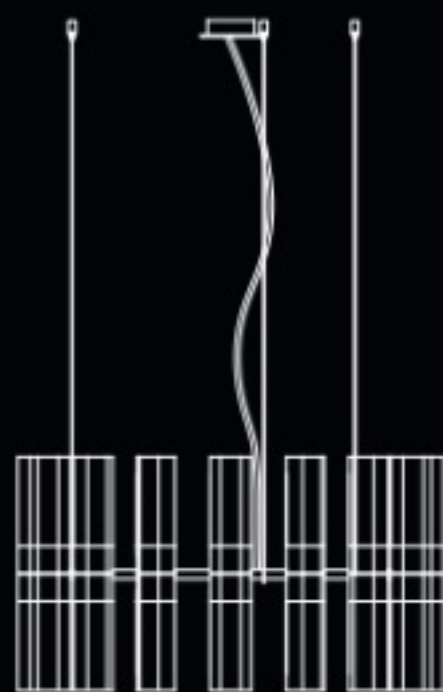
Item Chaos 04
 Ø 80 cm
 H.60 cm min



Item Chaos 05
 Ø 72 cm
 H.40 cm min



Item Chaos 06
 Ø 72 cm
 H.70 cm min



Item Chaos 07
 Ø 72 cm
 H.70 cm min



Item Chaos 08
 Ø 72 cm
 H.70 cm min



Item Chaos 09
 Ø 7 cm
 H.30 cm min

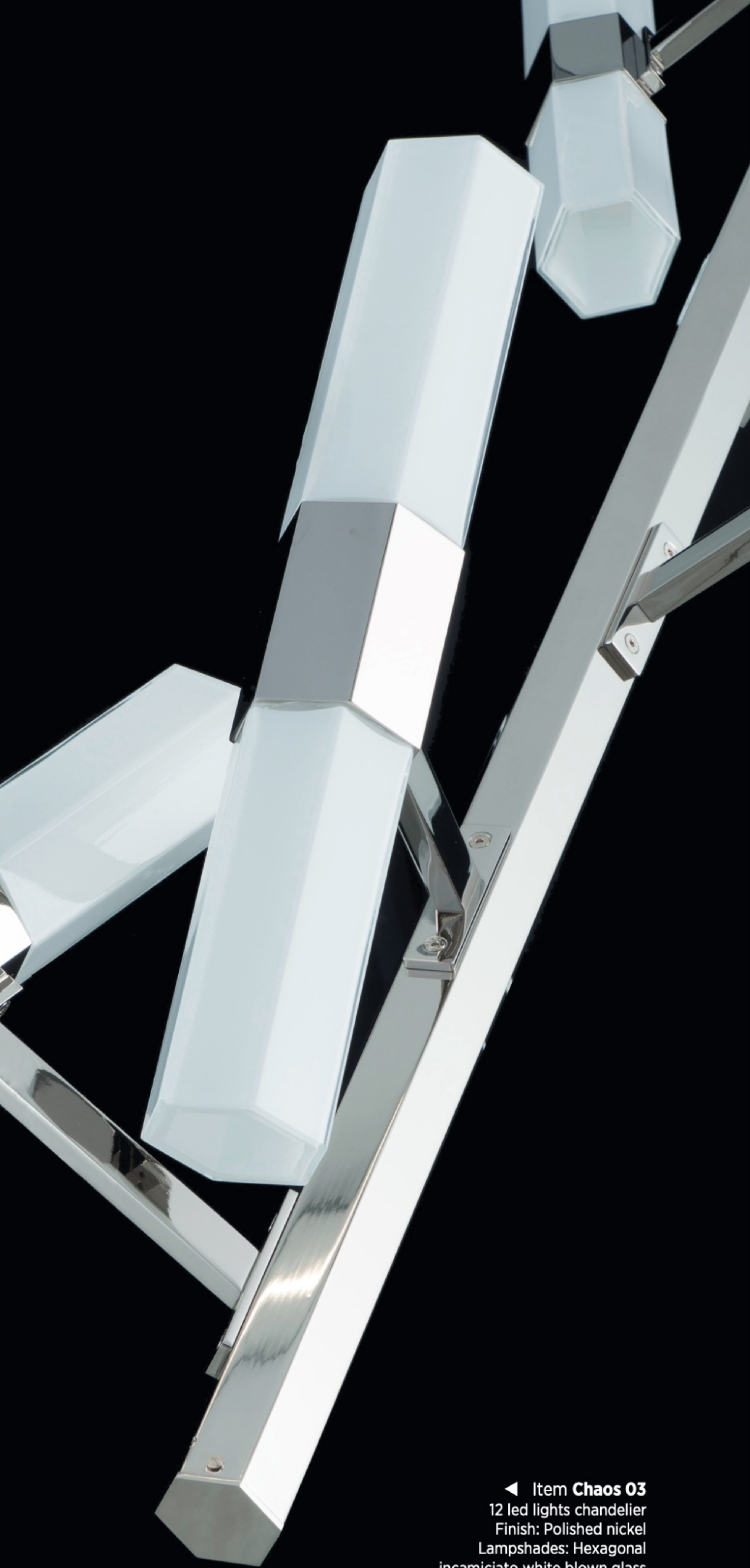


Item Chaos 10
 L.7 x D.28 cm
 H.40 cm



Item Chaos 11
 L.7 x D.25 cm
 H.35 cm





◀ Item **Chaos 03**
12 led lights chandelier
Finish: Polished nickel
Lampshades: Hexagonal
incamiciato white blown glass

lampshades



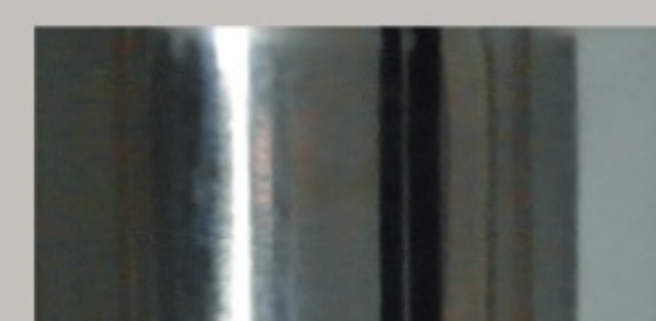
hexagonal clear blown glass



hexagonal incamiciato white
blown glass



clear cutted crystals



polished nickel

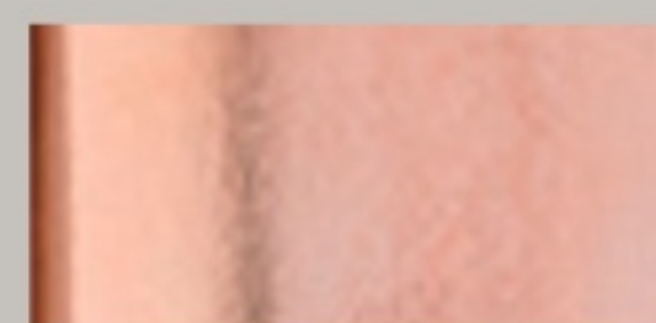
metal finishes



gunmetal



gold plated



copper