

designer ROBERTO LAZZERONI

# CDF - Coup De Foudre

year: 2017

A precious, important, customizable collection,  
made of voluptuous cornucopias illuminated  
by a dimmable led light.





▲ Item **CDF01** (composition of 4 pieces)  
Led chandelier  
Finish: Satin gold  
Accessories: Satin white glass

◀ Item **CDF05**  
Led chandelier



◀ Item **CDF04**  
Led chandelier  
Finish: Satin gold  
Accessories: Clear glass

Softness  
and **strength.**  
Sensuality and  
**character**



▲ Item **CDF05**  
Led chandelier  
Finish: Polished nickel  
Accessories: Clear glass

Love  
at **first**  
sight

Love at first sight between glass and metal.  
A light cascade suited for a vertical or horizontal  
development, according to the needs.  
One, two or many elements. The imperfect,  
organic and sinuous lines of the hand blown  
glass are contrasted by a metallic modular  
structure.  
Softness and strength. Sensuality and character.



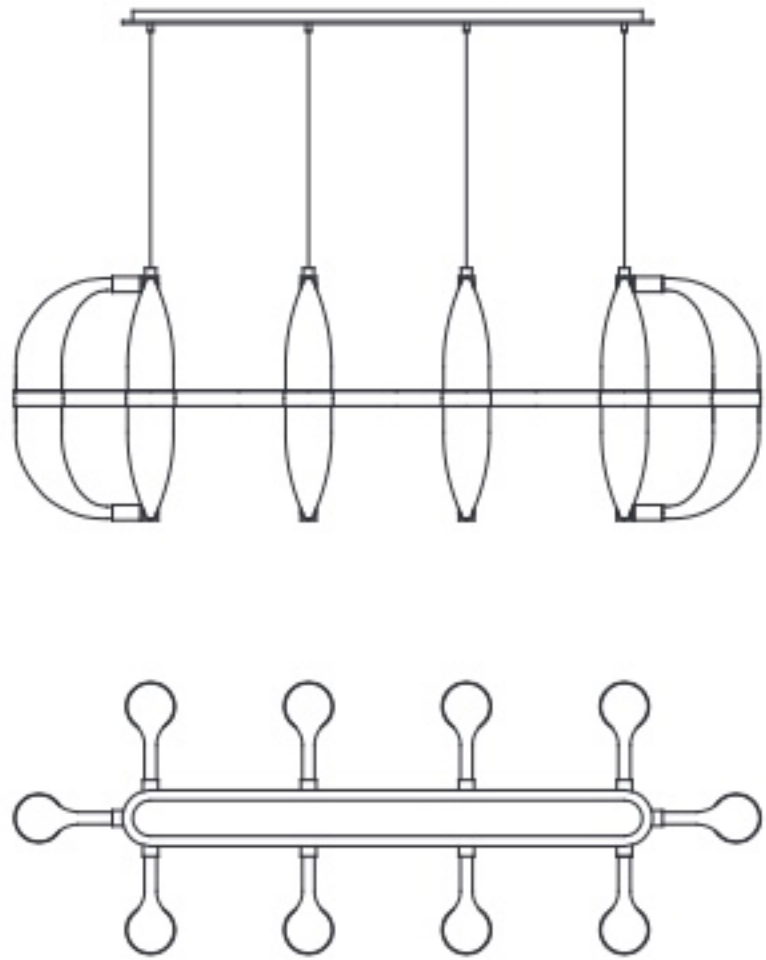


▲  
◀ Item **CDF04**  
Led chandelier  
Finish: Satin gold  
Accessories: Satin white glass

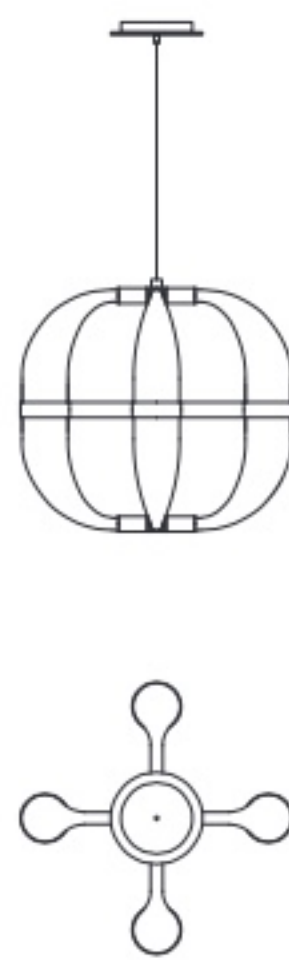


# collection

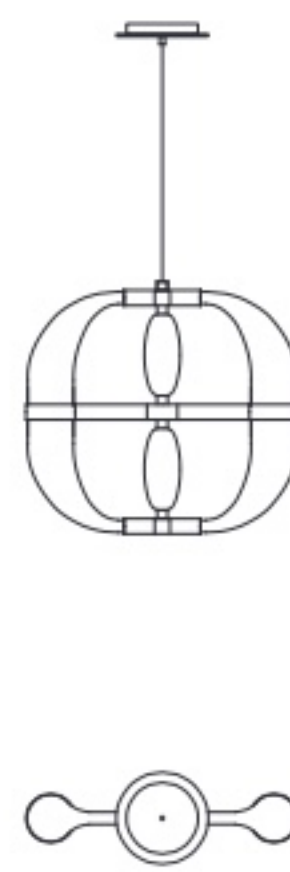
Item **CDF05**  
L.148 x D.53 cm  
H.69 cm min - 204 cm max



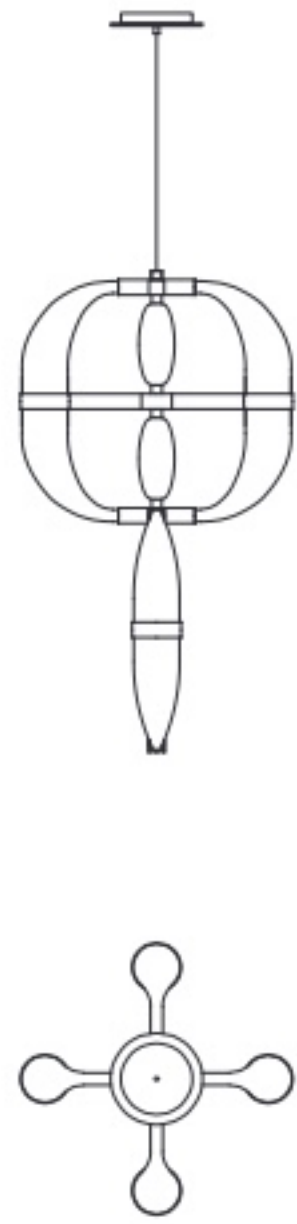
Item **CDF01**  
L.53 x D.53 cm  
H.69 cm min - 204 cm max



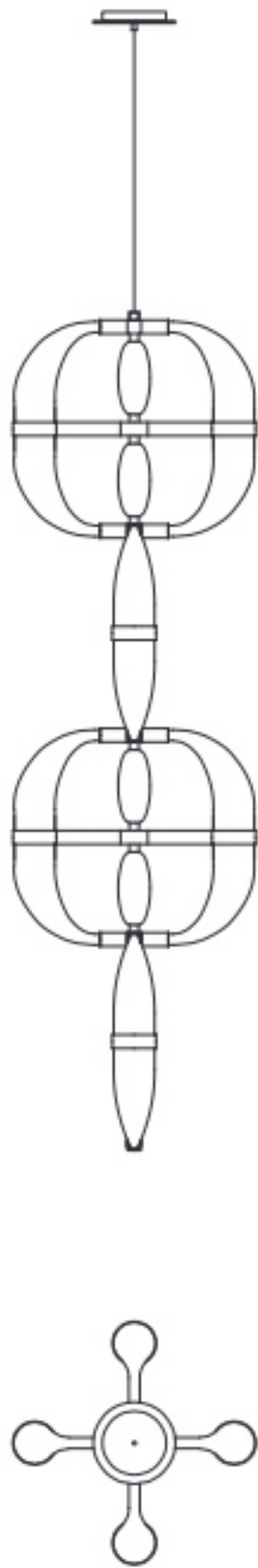
Item **CDF02**  
L.53 x D.20 cm  
H.69 cm min - 204 cm max



Item **CDF03**  
L.53 x D.53 cm  
H.115 cm min - 250 cm max



Item **CDF04**  
L.53 x D.53 cm  
H.207 cm min - 342 cm max



▲ Item **CDF01**  
Led chandelier  
Finish: Gunmetal  
Accessories: Satin white glass



▲ Item **CDF01**  
Led chandelier  
Finish: Gold plated  
Accessories: Amber glass



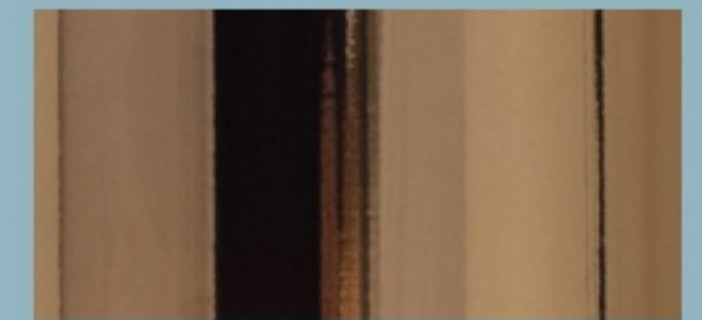
▲ Item **CDF01**  
Led chandelier  
Finish: Polished nickel  
Accessories: Clear glass



polished nickel



gunmetal



gold plated



satin gold



satin white



clear



satin amber



amber

metal finishes

blown glass colour



▲ Item **CDF02**  
Led chandelier  
Finish: Polished nickel  
Accessories: Satin amber glass